



6th PhD School on Traffic Monitoring and Analysis TMA
2016 - Louvain La Neuve, Belgium, 5-6 April 2016

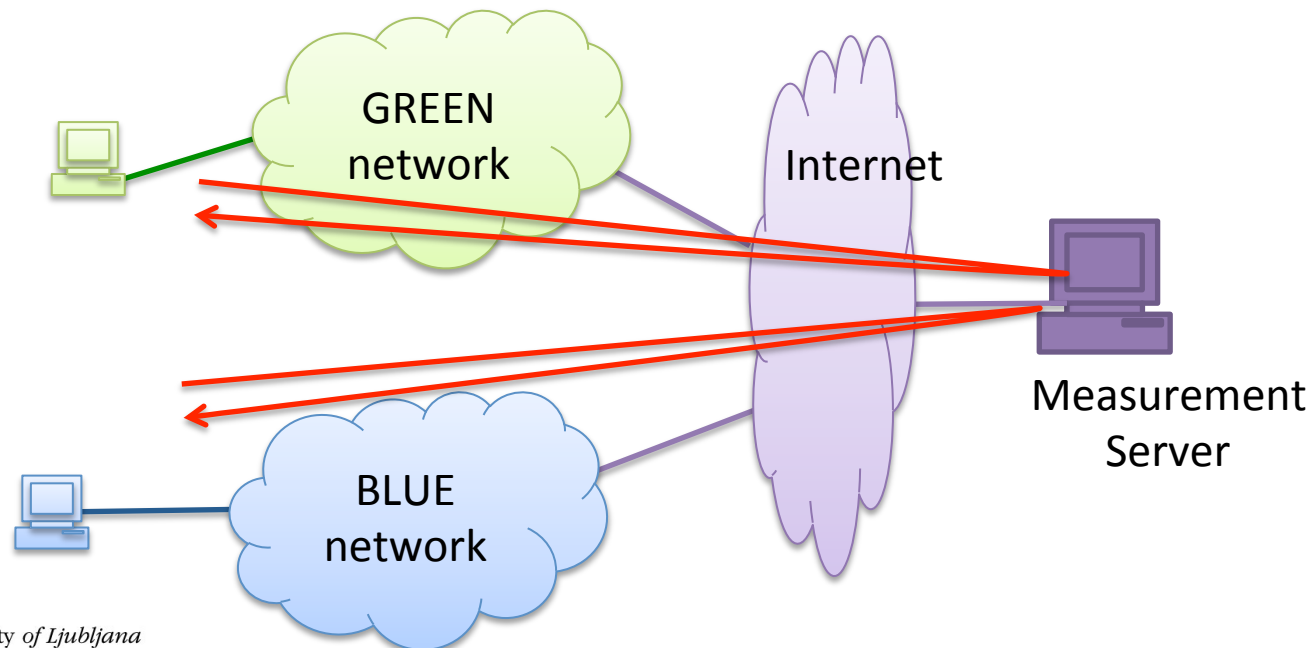
Toy Exercise - Assignment

Fabio Ricciato

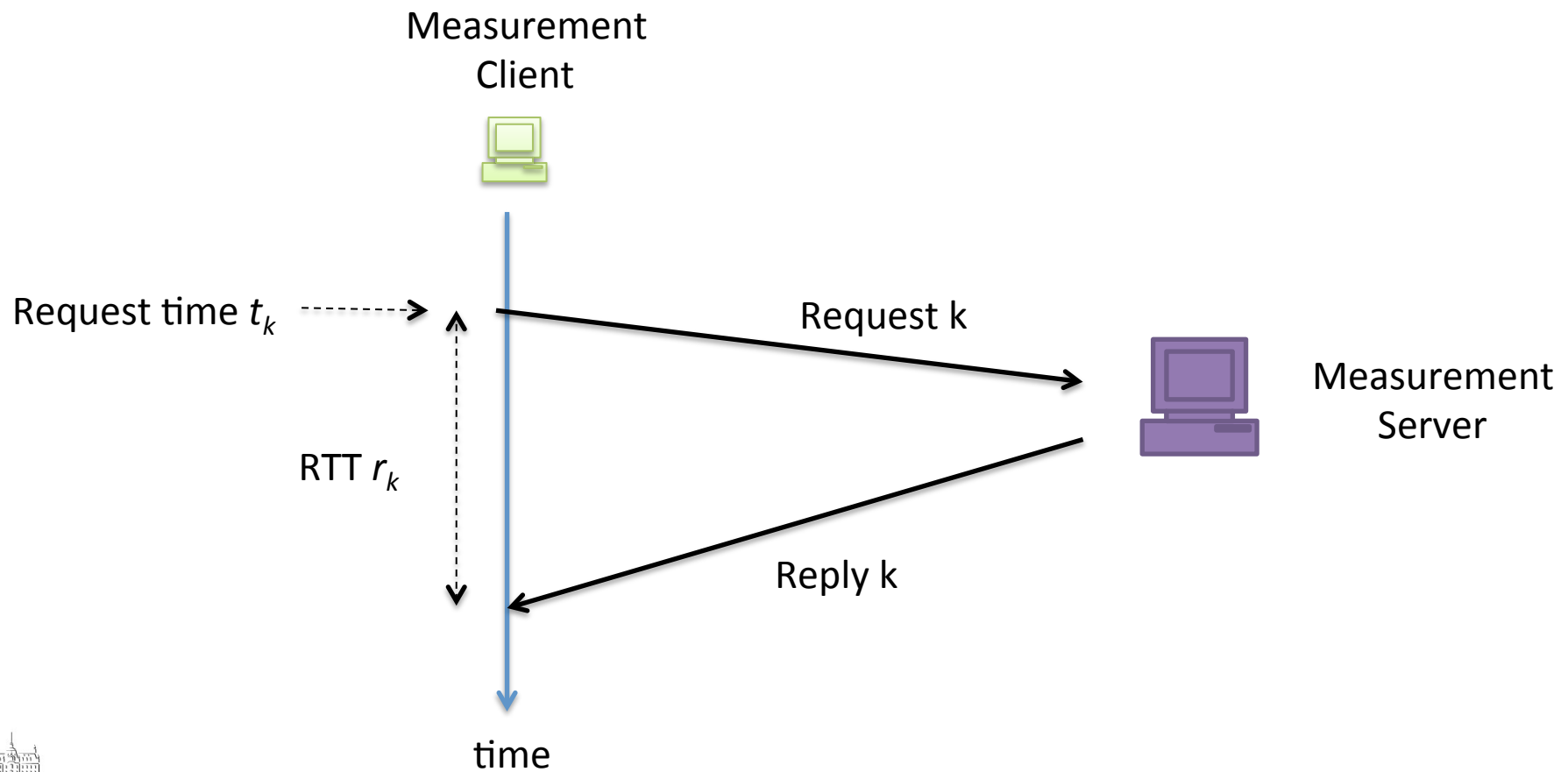


Scenario

- Scenario: the **Green** and **Blue** teams have measured Round-Trip Times (RTT) from their respective access networks via repeated request/reply to the same server



Methodology



Scenario

- They provide you
 - A succinct description of their measurement methodology
 - The raw measurement data
 - files dataB.txt, dataG.txt
 - two columns for Start time t_k and RTT r_k

StartTime	RTT
972.00000000	0.01172138
972.02004475	0.01476894
972.04011993	0.01303928
972.06021071	0.01749107
...	...



Measurement methodology described by Blue team

“We run a series of periodic request/reply measurements towards the common measurement server. For every request packet k we record the departure timestamp t_k and start a timer. Every request carries a unique ID in the payload that is replicated in the reply packet, in order to ensure correct association between the reply and the corresponding request. When the reply packet is received, we record the value of the timer r_k . If the reply is not received within a maximum predefined timeout, we mark the request as “lost” and write “-1” in the output file. Consecutive measurements are spaced by 20 ms. The experiment started at 9:16 AM of 11.3.2016.”



Measurement methodology described by Green Team

“We have followed the same measurement methodology described by the Blue Team, with the same spacing interval of 20 msec between consecutive measurements. But we started a bit later, around 9:21 AM of the same day.”



Your task

- Process the data and ...
- ... determine which network has the **best performances**
- motivate your answer, provide quantitative performance metric values in support of your answer.

- Have fun 😊
- for questions & comments email to:

fabio.ricciato@fri.uni-lj.si

